



MRS400.16

INSULATED DIODE MODULE

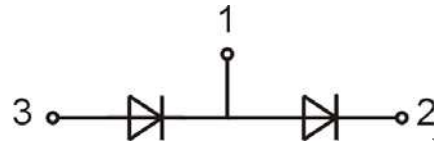
Output Current **400 A**
 V_{RRM}/V_{DRM} **1600 V**

Features:

- Isolated mounting base 2500V~
- Pressure contact technology with Increased power cycling capability
- UL file n° E312789

Typical Applications

- AC/DC Motor drives
- Various rectifiers
- DC supply for PWM inverter



SYMBOL	CHARACTERISTIC	TEST CONDITIONS	$T_j(^{\circ}\text{C})$	VALUE			UNIT
				Min	Type	Max	
$I_{F(AV)}$	Mean forward current	180° half sine wave 50Hz Single side cooled, $T_C=100^{\circ}\text{C}$	150			400	A
$I_{F(RMS)}$	RMS forward current		150			628	A
I_{RRM}	Repetitive peak current	at V_{RRM}	150			30	mA
I_{FSM}	Surge forward current	10ms half sine wave	150			13.0	kA
I^2t	I^2t for fusing coordination	$V_R=0.6V_{RRM}$				845	$\text{A}^2\text{s}\cdot 10^3$
V_{FO}	Threshold voltage		150			0.75	V
r_F	Forward slope resistance					0.50	m Ω
V_{FM}	Peak forward voltage	$I_{FM}=1200\text{A}$	25			1.48	V
$R_{th(j-c)}$	Thermal resistance Junction to case	Sin 180° (per Diode)				0.10	$^{\circ}\text{C}/\text{W}$
$R_{th(c-h)}$	Thermal resistance case to heatsink	(per Diode)				0.02	$^{\circ}\text{C}/\text{W}$
V_{iso}	Isolation voltage	50Hz, R.M.S, $t=1\text{min}$, $I_{iso}:1\text{mA}(\text{max})$		3000			V
F_m	Terminal connection torque(M10)				12.0		N·m
	Mounting torque(M6)				6.0		N·m
T_{vj}	Junction temperature			-40		150	$^{\circ}\text{C}$
T_{stg}	Stored temperature			-40		125	$^{\circ}\text{C}$
W_t	Weight				1275		g

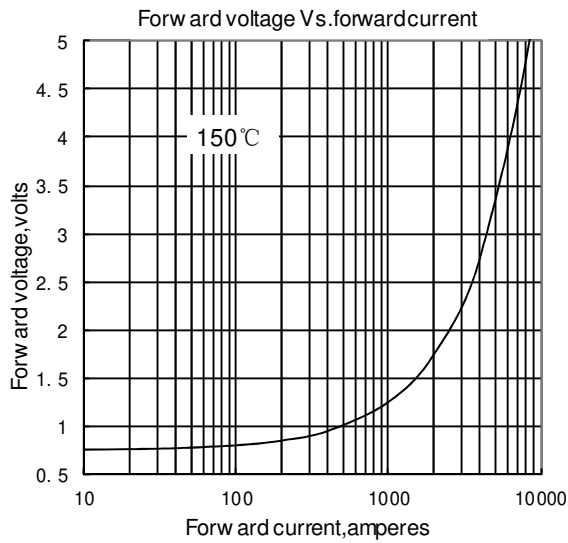


Fig.1

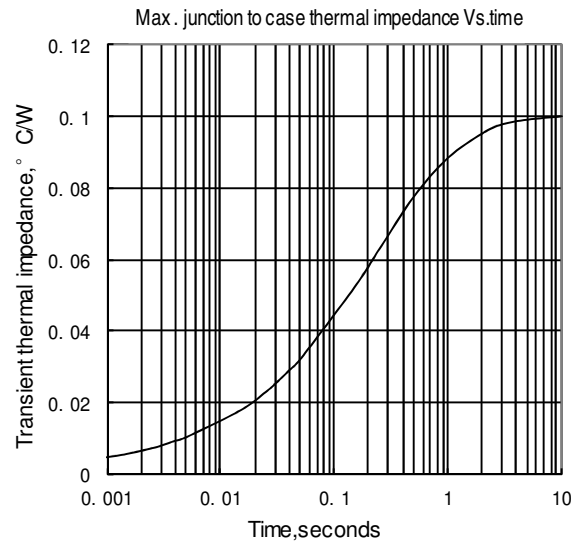


Fig.2

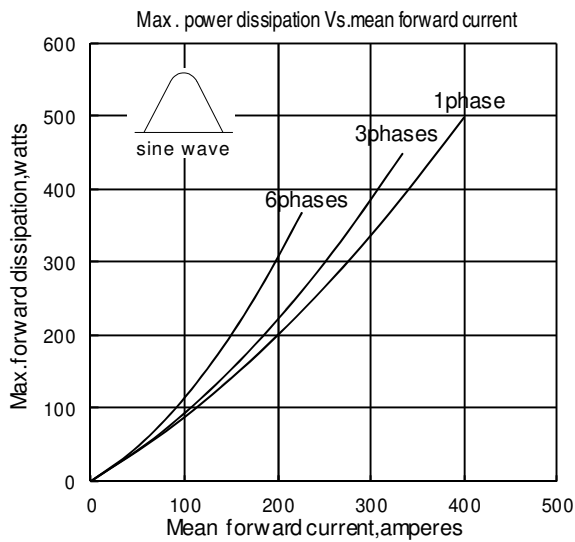


Fig.3

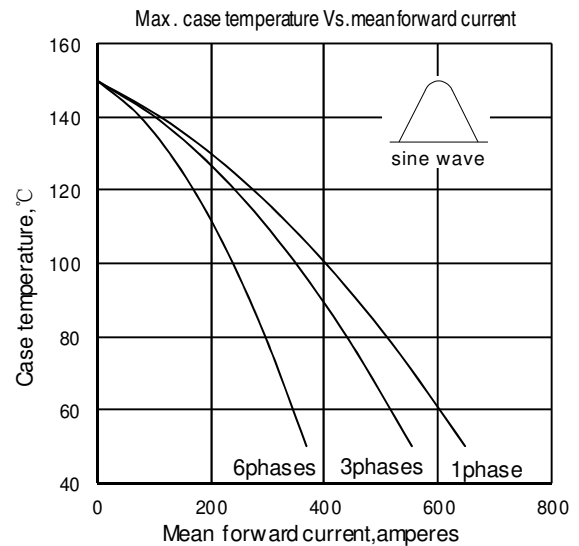


Fig.4

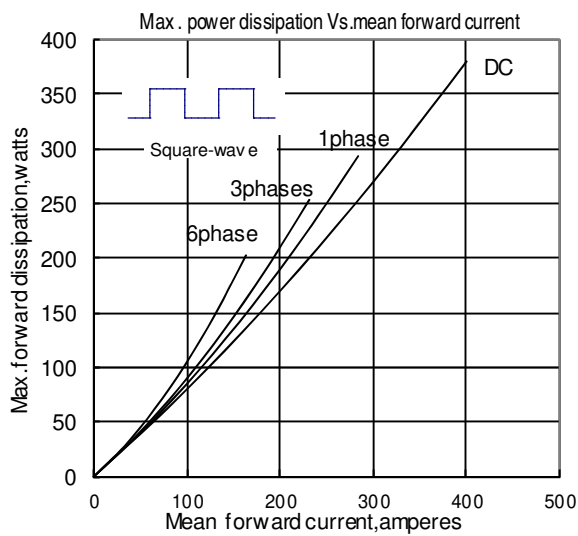


Fig.5

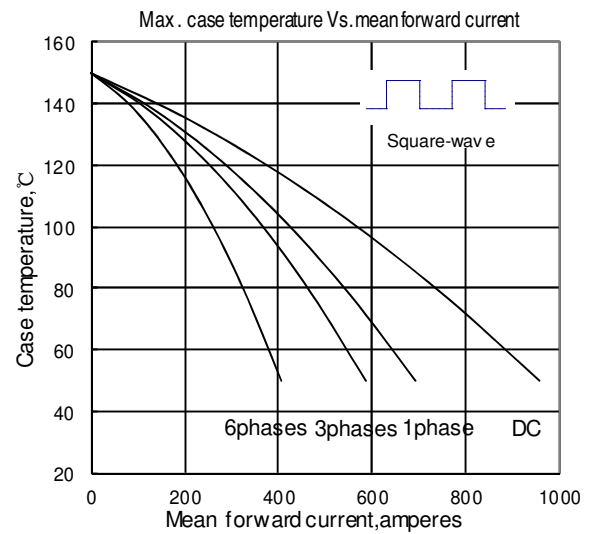


Fig.6

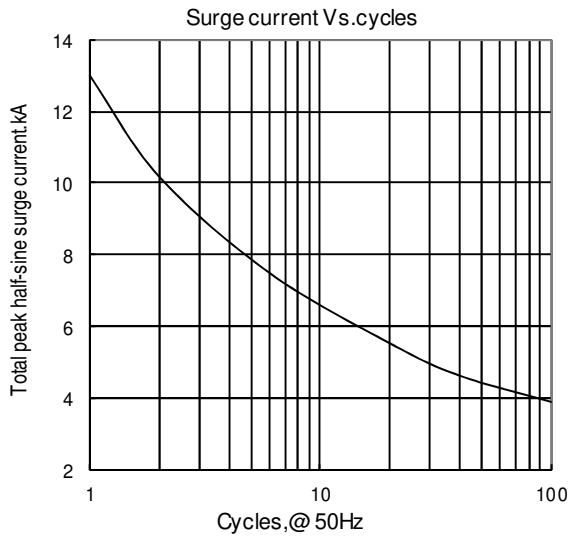


Fig.7

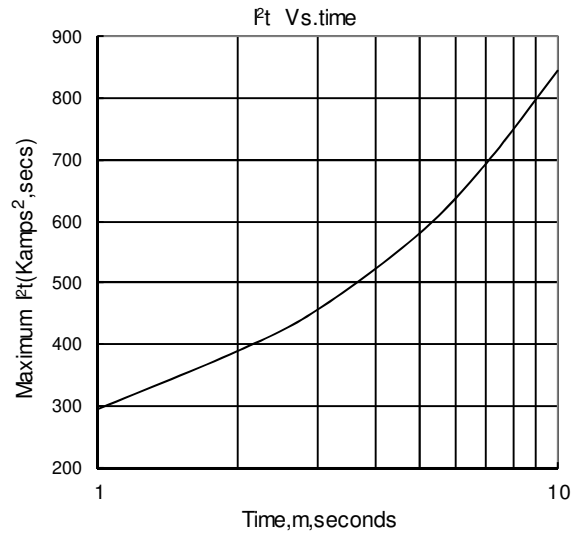
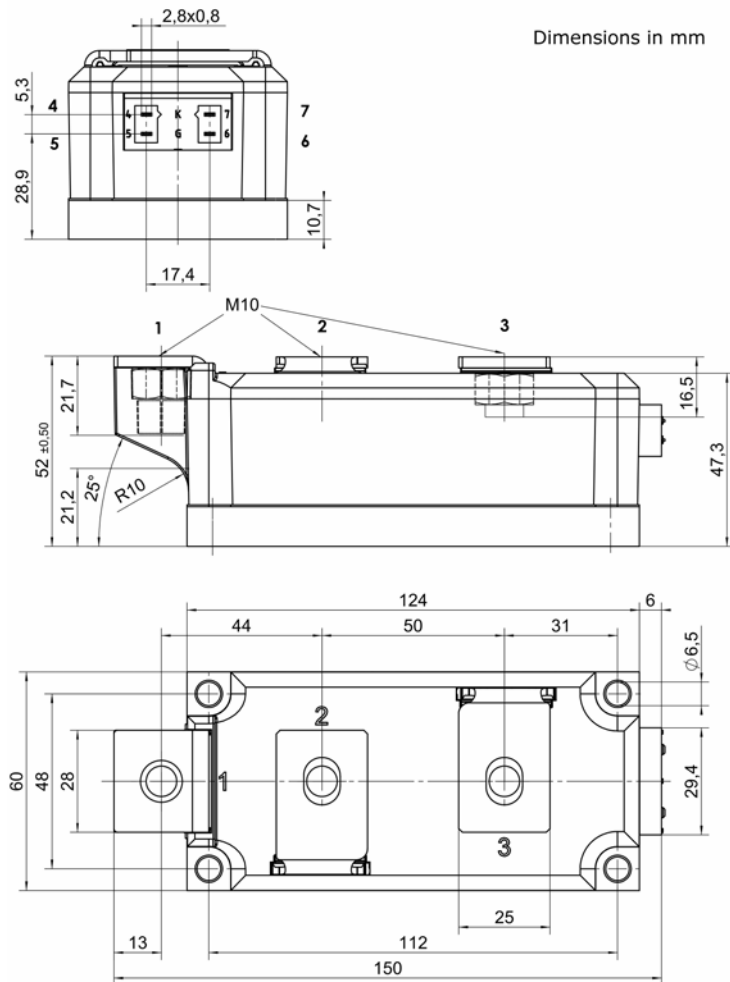


Fig.8



Scomes srl reserves the right to change any specification without notice

issue:jan-2023